

Connecting to your virtual desktop

Arthur Mee Road, Stapleford, Nottingham. NG9 7EW
0845 094 9170
www.advanceditservices.co.uk

Connect to the desktop by firstly clicking the link below:

1

<https://vdi.advanceditservices.co.uk/rdweb>

This will then ask you for your login details to sign in.
Remember to add **discover** before your username.



Work Resources

RemoteApp and Desktop Connection

2

To log on use your normal login details
include **discover** BEFORE your username

Domain/Username:

discoveryourusername

Password:

yourpassword

Sign In



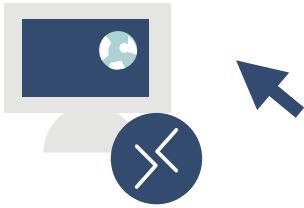
Work Resources

RemoteApp and Desktop Connection

RemoteApp and Desktops

3

Current Folder: /



GS WIN 7 DESKTOP

Click the icon to download. Then click **save** or **run** depending on your browser.

4

Enter your credentials

These credentials will be used to connect to VDI.discover.gsft.

Domain/Username:

Password:

OK

Cancel

Enter your login information not forgetting the discover\ before your username. Click OK to login.

5



Connecting to:
VDI.DISCOVER.GSFT.



Cancel

Configuring remote session ...

Please wait for your login to load and then you'll be connected to the desktop.

Connecting to your virtual desktop via a mobile device

Arthur Mee Road, Stapleford, Nottingham. NG9 7EW
0845 094 9170
www.advanceditservices.co.uk



Microsoft Remote Desktop

[download](#)

1

Search for '*Microsoft Remote Desktop*' in the app store and download. Once downloaded open the application to launch the remote access.

2



Remote Desktops

New Remote Desktop >



Configuration

Settings >

Remote Resources >

Help >

About >

To set up a connection click '*Remote Resources*'

Cancel

Remote Resources

Save

Server

URL <https://vdi.advanceditservices.co.uk/rdweb/> >

Credentials

User name [discover\yourusername](#) >

Password [yourpassword](#) >


3

Enter the details above remembering to include **discover** BEFORE your username.

Remote Desktops

New Remote Desktop >

 Remote Resources for <https://vdi.advanceditservices.co.uk/rdweb...>

 GS Win 7 Desktop >

Configuration

Settings >

Remote Resources >

Help >

About >

4

Press GS Win 7 Desktop to remotely access your desktop.